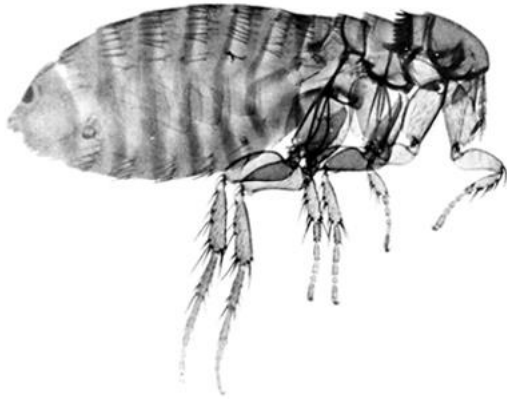


FLEAS



BIOLOGY

- After each blood meal, females lay four to eight eggs at a time (but 400 to 800 total within her lifetime) on the host animal and/or its bedding.
- Eggs hatch in about 10 days, and the developing larvae feed on the adult flea feces, which contain bits of dried blood.
- Fleas seek a blood meal within two days of becoming an adult

CONTROL

- The pet needs to get onto a flea program arranged by a Veterinarian
- All clothing, pet blankets, and linen should be washed at the same time the treatment is done
- The house should be thoroughly vacuumed to remove larvae, pupae, and food materials. The vacuum bag should be sealed and discarded immediately after vacuuming.
- The inside should be treated (all rooms to provide the most success) – cracks and crevices as well as carpets and furniture
- Pet bedding should be washed in hot, soapy water.
- A registered and labelled residual spray needs to be used in the cracks and crevices as well as an aerosol for the fabric furnishings.

TO TREAT THE SITUATION YOURSELF

Residual Sprays

- Apply the product to all baseboards (apply to the top to allow it to seep behind the baseboards), cracks, and crevices
- The fleas will die as they come in contact with the spray
- Everyone (including animals) must stay out of the premises for a minimum of four (4) hours (windows can be left open or fans can be on to air out the rooms) – this allows the spray enough time to dry
- If the cracks and crevices in the kitchen cupboards have been treated, it is recommended to cover the shelves with lining to protect their items from the chemical (you can thoroughly wash out the cupboards before you apply the spray).
- The spray may stain the carpet and other materials – so you should always do a test first.



Contact spray containing pyrethrin (fabrics)

- This product can be safely used on carpets and fabrics.
- It will only kill on contact so it would need to be reapplied. Read the product label and follow the directions.

Laundry Instructions

- All clothing, bedding, linens and curtains should be washed during the insecticide treatment
- This will clean out the adults as well as the egg sacs from the fabric
- It is recommended to wash everything at the time of treatment – the more thorough the job, the better chances of solving the problem.

Winnipeg
24 Poulin Drive
204-233-2500
888-768-5467

Brandon
707 10th St
204-727-7934
877-727-7934

Regina
1245 Winnipeg St
306-757-0323
877-433-4877

Saskatoon
1524 Idylwyld Dr N
306-242-5229
877-287-2340

Calgary
4801 – 32 St SE
403-272-6006
877-533-2500

Edmonton
8737 118th Ave
780-477-1671
877-477-1971

Lethbridge
608 13th St N
403-394-3600
877-533-2500